



Mobile and autonomous solar power plant Mobil-Watt

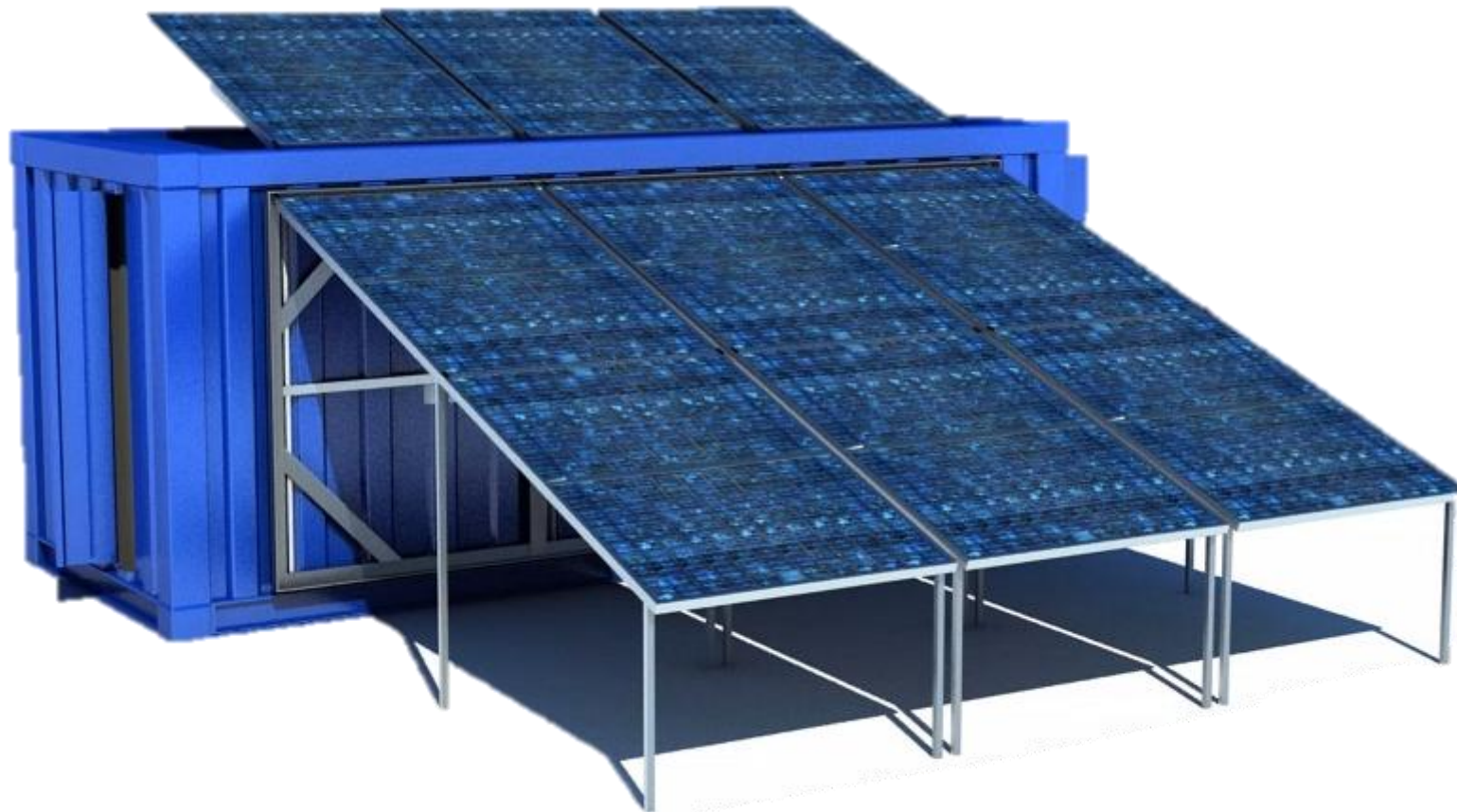
Why the Mobil-Watt Container ?

- ✓ *Modular and adaptive offer for solar production of energy (exist in various power size)*
- ✓ *Independent of the electric network, allows to electrify areas non-covered by the electricity grid*
- ✓ *Fast plug-and-play installation without any specialized manpower need*
- ✓ *Ideal solution for : factories, villages, agricultural pumping stations, water purification ...*

Mobil-Watt technology:

- ✓ *High European material quality:*
 - *French tropicalized solar panels made for hot and dusty conditions*
 - *Ventilated inverters and European waterproof cable*
 - *Anticorrosion structure*
 - *Monitoring and supervision via GSM or MtoM phone card*
- ✓ *Night electricity available via batteries storage (allows the storage of foodstuffs, lights, ventilators...)*
- ✓ *In option : EMS Energy Management System allowing to interconnect other electricity sources (diesel generator, network...) in order to optimized its sourcing of the lowest energy at disposal.*

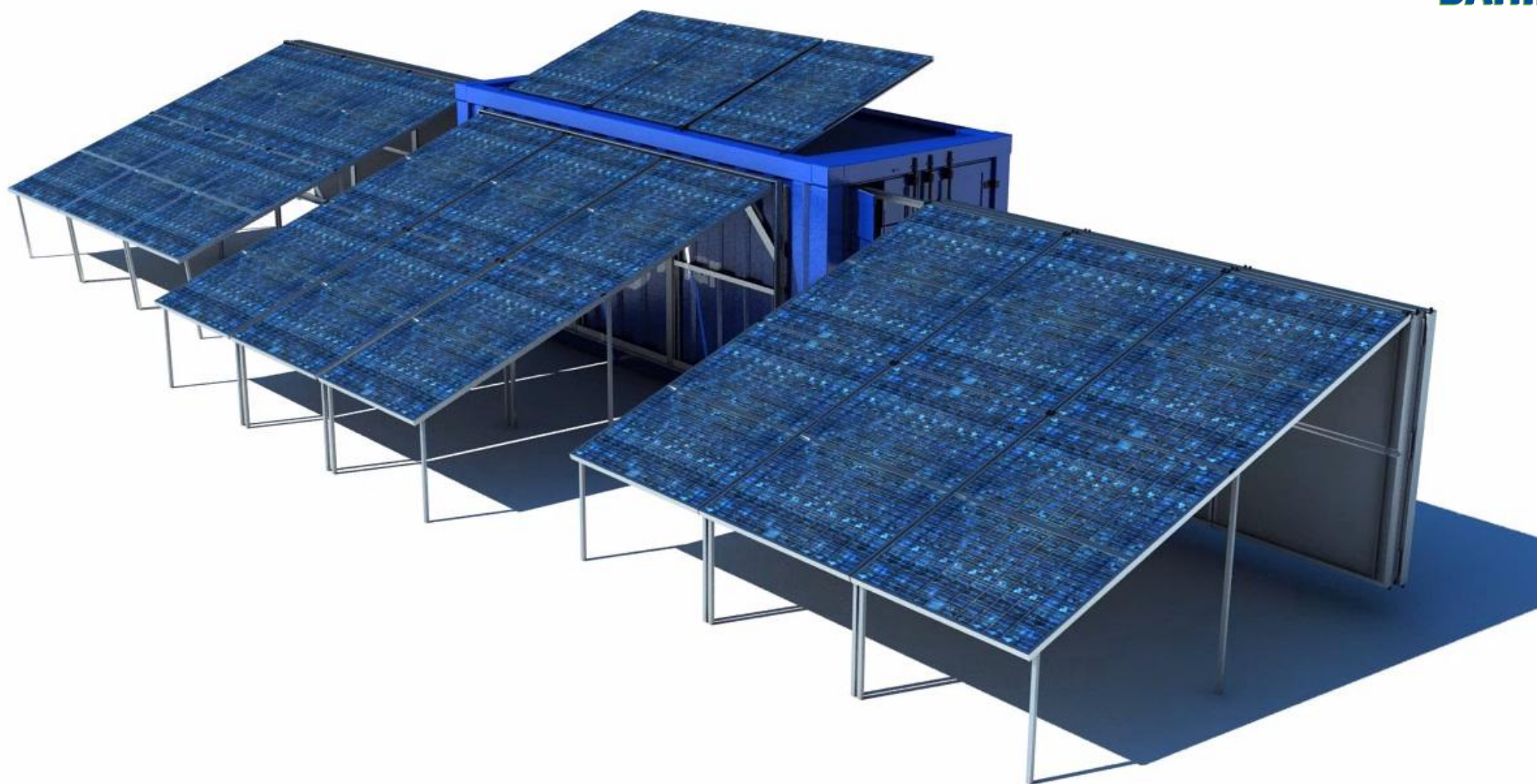
✓ *South oriented version*

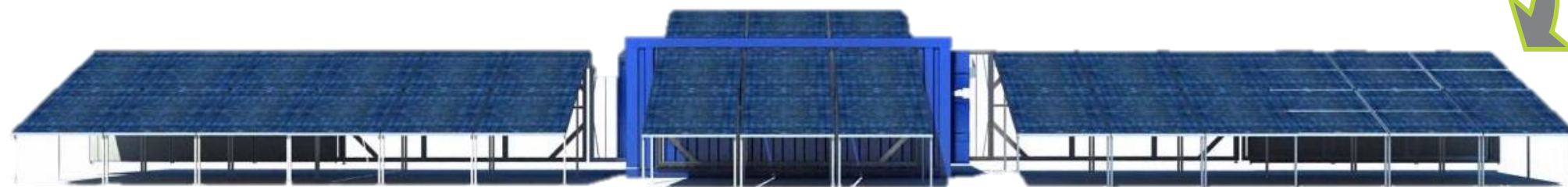


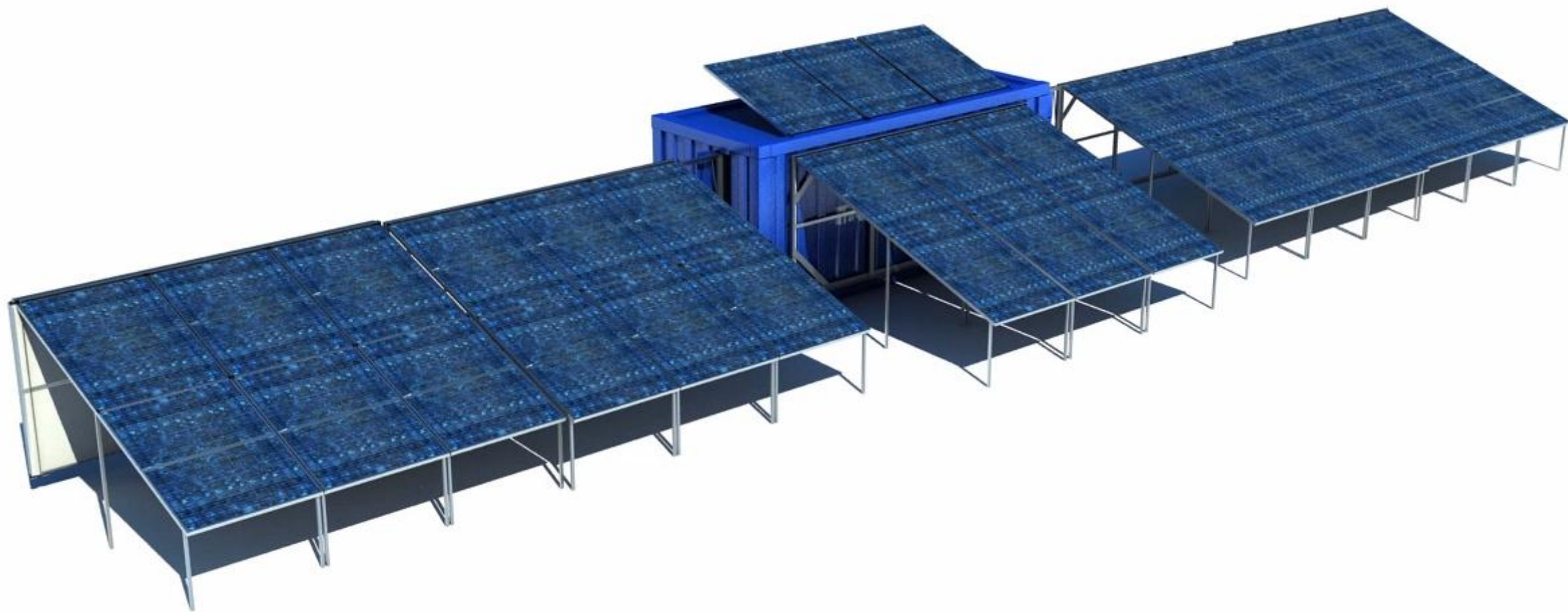


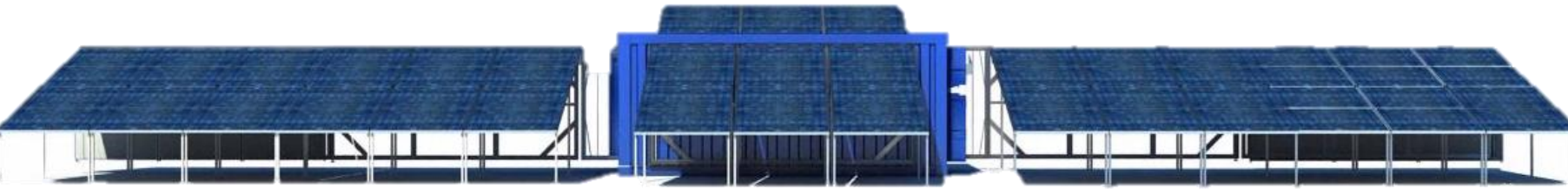
✓ *South oriented version*



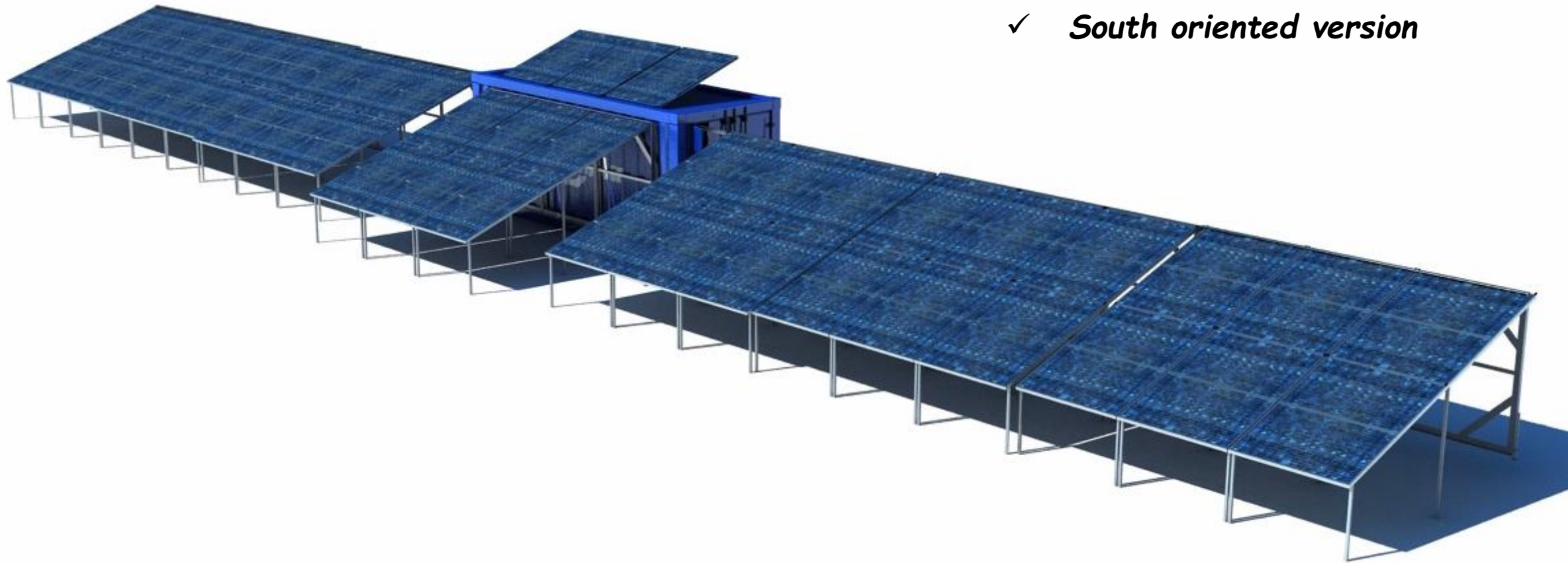




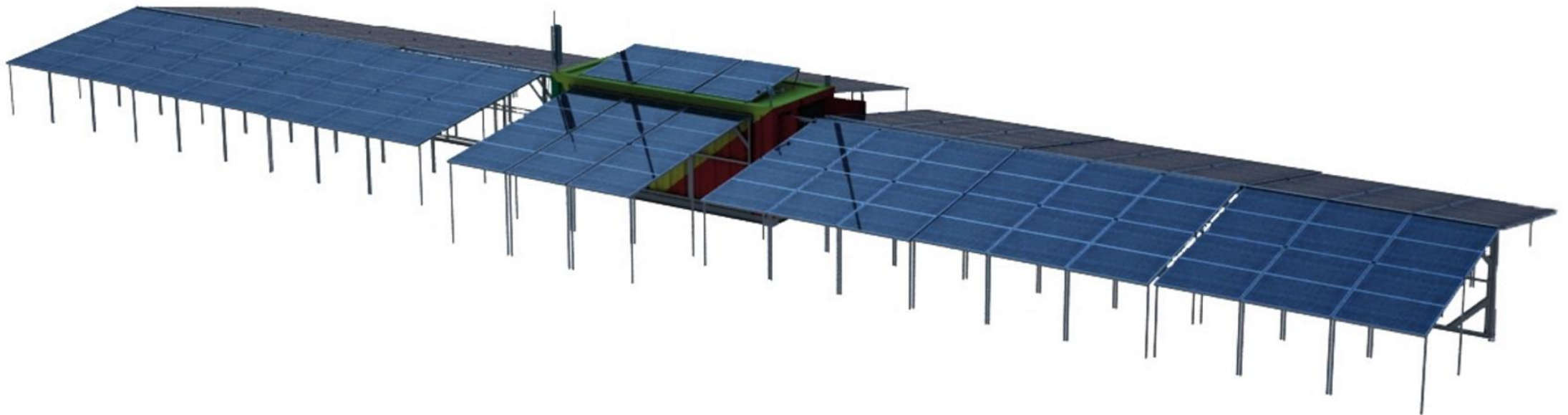




✓ *South oriented version*



- ✓ *All the Mobil-Watt containers are available in East/west version en Est/Ouest permitting a better uniform production during the day*



How is the offer declined?

- ✓ *Several sizes available and adaptable orientation South or East / West*
- ✓ *Adaptable battery power based on your own night needs*
- ✓ *Possibility to provide a large number of users*
- ✓ *Controllable remote installation via GSM*
- ✓ *Turnkey installation: no other tools or parts needed*
- ✓ *No concrete basement (flat land or area is sufficient)*
- ✓ *Protection of all electronic sensible parts without any direct access*

- ✓ *Optimized solution for shipping and ready to carry for repositioning in isolated area*
- ✓ *Folding and unfolding the Mobil-Watt in less than 3 hours. Can be repositioned anytime at any other place*
- ✓ *Flexible solution in case of weather risks (windstorm, sandstorms, thunderstorms...)*
- ✓ *Possibility to provide custom made solutions :*
 - *Size*
 - *Storage capacity*
 - *...*

The Mobil-Watt solutions:



Model	Orientation	Number of panels	Power
Eco S18	South	18	5,4 kWc
Eco EW30	East/West	30	9 kWc
Eco S42	South	42	12,6 kWc
Eco EW78	East/West	78	23,4 kWc
Eco S66	South	66	19,8 kWc
Eco EW126	East/West	126	37,8 kWc
Eco S90	South	90	27 kWc
Eco EW174	East/West	174	52,2 kWc

The Mobil-Watt options:



Option	Specificities	Capacity
Storage/batteries LiFePO4	4500 cycles (approximately 15 years of service) 5 years warranty (max. 90 kWh)	1 unit of 15 kWh or
		1 unit of 30 kWh or
		1 unit of 45 kWh
Distribution cable	36 plugs+ 50 m cable	1 unit
Monitoring system	Connection via GSM if network	1 unit
Diesel Generator	5 kW	1 unit

Possible Mobil-Watt add-ons :



- ✓ *Connection to a container based water purification system :*
 - *from 1 to 40 m³/h capacity per unit, depending on the quality of water made at disposal and expected to be delivered*
 - *2 possible technologies : sand or membrane filtration*
 - *fully pre-installed system ready to connect and use*

Possible Mobil-Watt add-ons :



- ✓ *Connection to a water pumping station :*
 - *capacity and sizes depending on the depth of available water and capacity needed*
 - *2 possible applications : villages, or agricultural use*
- ✓ *Many other possibilities custom made to be discussed case by case :*
 - *Deep freeze container box for the storage of foodstuffs*
 - *Milling or food processing container (for human or animal feeding)*
 - *...*

PICTURES :



CONTACT:



Paco Norman
Managing Director

Cell +34 666 418 425
norman@sanibrun.com

Head Office:

Calle Dinamarca 31
Poligono Espiritu Santo
33010 Oviedo
Principality of Asturias
Phone +34 985 79 15 16
sanibrun@sanibrun.com
www.sanibrun.com

