

Haevy load temporary flooring system



AlliTrax Xtra

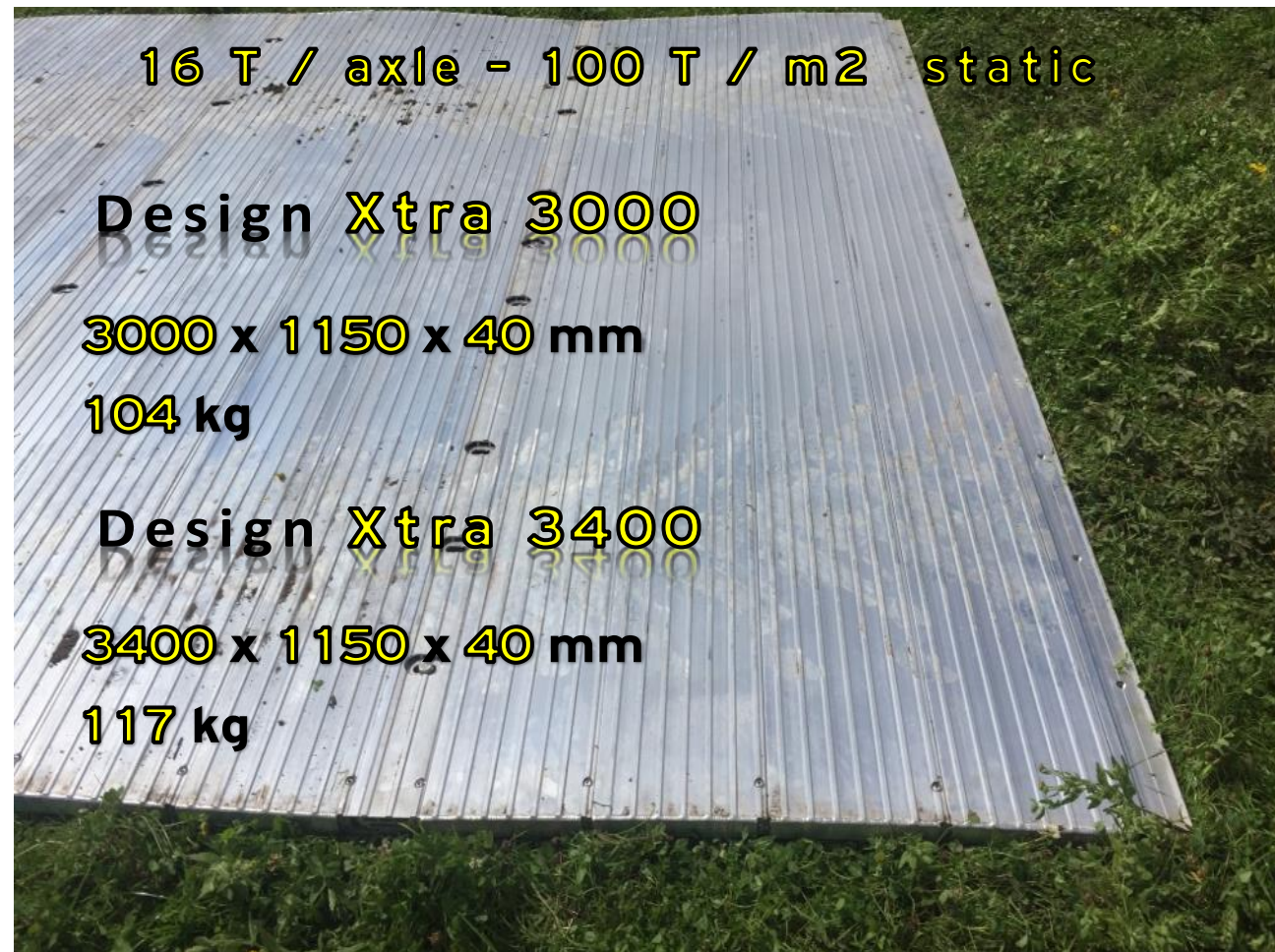
AlliTrax Xtra is the perfect system to create temporary road which need to support heavy load in in extreme using.

Each 4m² or 3,60m² panel is composed of aluminium parts and permit to share the load.

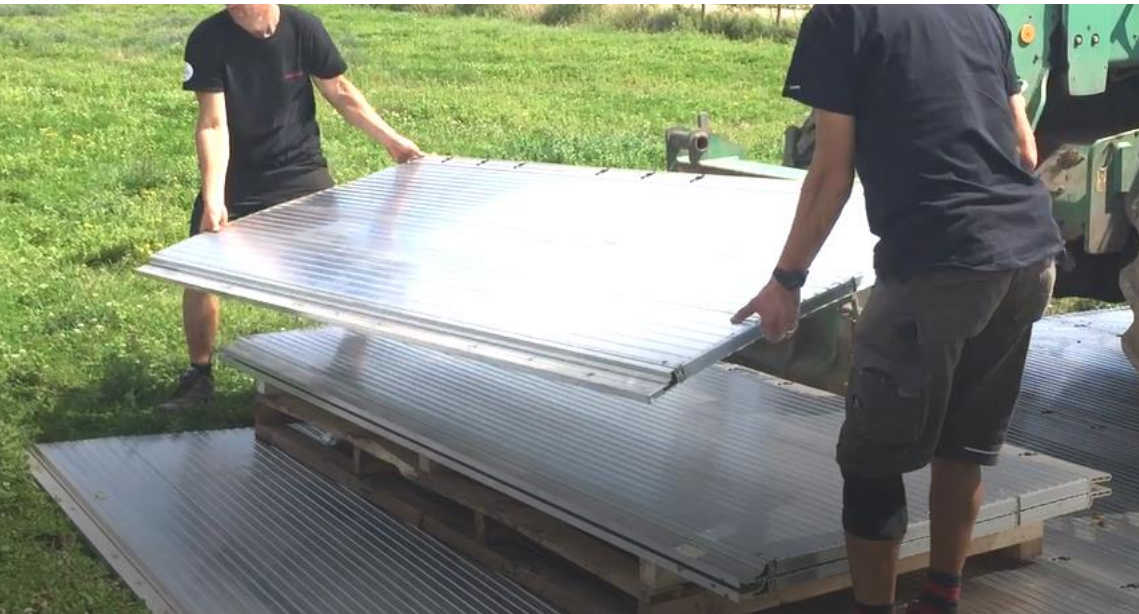
Some kinds of vehicles can use AlliTrax Xtra in total security.

Easy assembling and disassembling. The lightness of the concept permit to decrease the transport and labour cost. Aluminium assure a length of life.

Each panel of 3,00 or 4,00 x 1,15 m is made up aluminium 6 parts and 2 parts at each end that are used to assembly. AlliTrax Xtra is made of aluminium alloy with special heat treatment (6082) and mechanical properties correspond to European standards UNE-EN-755-2.



HANDLING AND ASSEMBLING



Handling with only
2 people.

Assembling time :
40-50 linear meter/hour.

Delivery :
14 panels / pallet - 50 m² o 16 ml
224 panels / truck - 800 m² o 260 ml

ASSEMBLING



CLEANING

Very easy maintenance
with high pressure water

This kind of cleaning can not damage the
AlliTrax Xtra.



PICTURE RELIBRARY





Paco Norman

Cell +34 666 418 425
norman@sanibrun.com

David Auguste Meyer

Cell +34 640 643 610
davidmeyer@sanibrun.com

www.sanibrun.com

Head office:

Poligono Espritu Santo
Calle Dinamarca 31
33010 Oviedo
Principado de Asturias
Espagne

GPS coordinates :
(43° 22'39.795" N)
(5° 48'38.254" W)

Phone Intl.: +34 985 79 15 15
Fax Intl.: +34 985 79 30 30

www.sanibrun.com
sanibrun@sanibrun.com

